



FLYER® 72 |

ADVANCED LIGHT
STRIKE VEHICLE



The Flyer® 72 is a non-developmental item, purpose-built, lightweight vehicle designed to meet complex mission sets. Selected by the U.S. Special Operations Command (USSOCOM) as the vehicle of choice for their Ground Mobility 1.1 (GMV 1.1) program, at 72" wide it is capable of internal transport in the CH-47 and C-130 aircraft.

The Flyer® 72 is a mature, highly mobile platform, with a payload capacity over 5,500 pounds, that can be configured to multiple crew sizes (up to nine). It can be guns up in less than one minute after exiting the aircraft, and is capable of carrying a variety of armaments. Its adaptable communications suite provides increased operating range and provides the operator real-time access to critical information.

As a reliable, high performance vehicle, the Flyer® 72 offers safe and fast operating speeds with superior levels of mobility and maneuverability. It's highly adaptable to severe, rugged and restrictive terrains while providing off-road, cross-country mobility in all types of weather conditions.

- ◆ **Increased Speed, Mobility & Transportability**
- ◆ **Tailable Command & Control Suite**
- ◆ **Scalable Modular Armor for Increased Protection**
- ◆ **Multiple Weapon Configurations**
- ◆ **Payload Adaptability**

FLYER 72

PERFORMANCE

Top Speed	95 mph (153 kph)
Cruising Range	300 miles (483 km) at Mission Profile; 500 miles on flat ground at 40 mph (1,046 km)
Maximum Grade	60%
Dynamic Side Slope	40%
Turning Radius	40 ft. (12.19 m) curb to curb
Fording	30" no prep (76 cm)



DIMENSIONS

Seating	Up to 7 seats: 3 front, 2 rear, 1 rear-facing (with optional secondary seat kit,) 1 gunner seat, 5 point seat restraints. 5 seats under armor configuration
Wheelbase	126" (320 cm)
Length	182" (462 cm); 193" (490 cm) with pushbar and winch
Body Width	Chassis width: 72" Width at tire: 79.25" (201 cm) Width with side cargo box: 85" (216 cm)
Height	72" (183 cm) Adjustable
Curb Weight	7300 lb. (3311 kg)
Payload	5700 lb. (2585 kg)
Gross Vehicle Weight	13,000 lb. (5897 kg)
Approach Angle	73.4°/55.5° w/pushbar & winch
Departure Angle	53.1°
Ramp Over Angle	146.7°
Vertical Step	18" (45.7 cm); 24" (61 cm) diagonal
Ground Clearance	14" (35 cm)
Fuel Capacity	23 gal. (87.5 L)
Chassis	Tubular Space Frame
Roll Cage	Integrated roll cages meets FMVSS 216 & SAE J2422 CH#5 & 6

POWERTRAIN

Engine Type	2.0 L GM DOHC BiTurbocharged Intercooled JP8/F24/Diesel Direct Injection Common Rail Fuel System
Horsepower/Torque	220 HP (164 kW)/ 332 ft. -lb. (450 Nm)
Transmission Type	Automatic power shift 6 speed (Tiptronic)
Torque Converter	Lockable
Differentials	Limited slip-front and limited-slip locking rear
Transfer Case	2 speed, high 4x2 or low full time 4x4

SUB SYSTEMS

HD Suspension, f/r	4-wheel coil over shocks independent adjustable suspension with 4 air spring variable ride
Service Brakes, f/r	Power assist 4-wheel disc with ABS
Wheel and Tire Size	Wheel size 37 x 13.5 R17 load range E with bead lock and VFI run flat

ELECTRICAL

12V Alternator	12V, 140 amp
12V/28V Alternator	12V/28V, 50/210 amp

MISSION CONFIGURATION - KITS

CASEVAC	Up to 3 litters; 2 in rear, 1 in front
HD Cooling System	More than 50C ambient operational capability
Weapons Compatibility	Heavy duty ring compatible with: M-2, MK-47, M-240 Mark -44 kit up to 18,000 round capable Door mounted side swing arm mounts x4
Armor Kit (Option)	Crew Protection Kit (CPK) Gunner Protection Kit (GPK)
HD Winch and Pushbar	13,000 lb rated system



Trademark and Copyright Notice
©2021 Flyer Next, LLC and Flyer Defense, LLC - All Rights Reserved

All trademarks are registered or unregistered trademarks of Flyer Next, LLC, Flyer Defense, LLC or one of their affiliates in the U.S. and are protected under trademark laws of the United States and certain foreign jurisdictions. Trademarks of third parties may appear in this presentation to refer to those companies' goods and services and are the property of their respective owners.





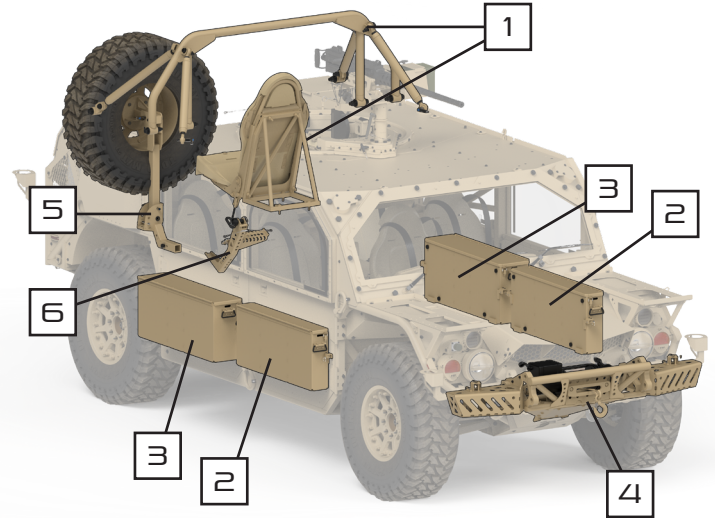
FLYER[®] 72

ADVANCED LIGHT STRIKE VEHICLE

EXTERIOR

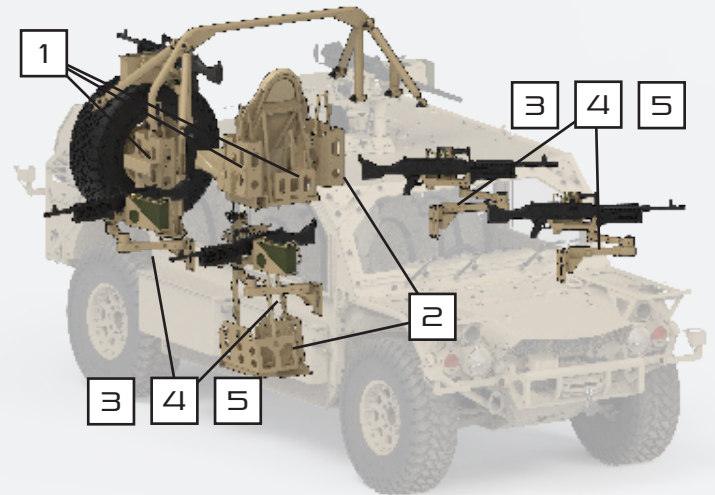
1*	AL4002206	Kit, Secondary Seating
2	AL4002295	Assembly, Narrow Cargo Box
3	AL4002307	Assembly, Wide Cargo Box
4	AL4021589	Kit, HD Lane Clearing and Winch
5	AL4009640	Spare Tire Carrier Assy, Side Rotating
6	AL4012898	Assy, Rear Step, Folding (For use with Spare Tire Carrier)

Incompatible with turret mounted rear ammo cans



WEAPONS

1	AL4005669	Assembly, AS Rocket Brackets
2	AL4005106	Assembly, LS Rocket Brackets
3	AL4011224	Weapon Pintle, Door Exterior
4	AL4006877	Weapon Swing Arm, M240/249
5	AL4006855	Weapon Mount, Machine Gun, M240/M249

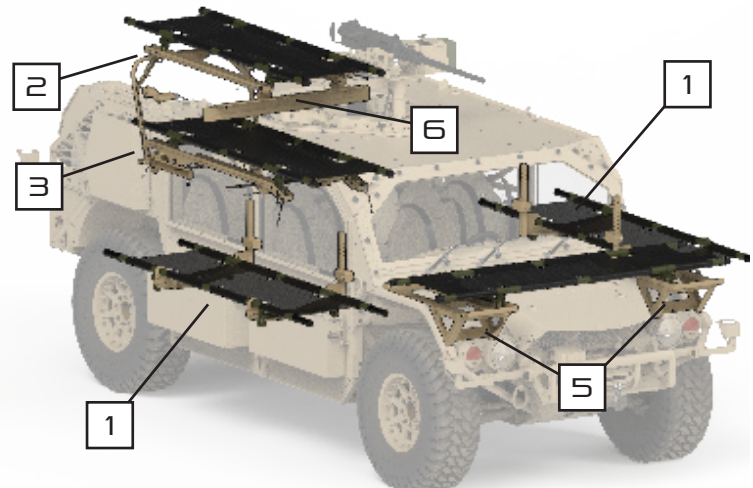


CASEVAC

1	57K8469	Kit, Exterior CASEVAC
2*	57K8472	Kit, Rear Deck Upper CASEVAC
3	57K8471	Kit, Rear Deck Lower CASEVAC
4**	57K8474	Kit, Litter System, Armor
5	57K8475	Kit, Litter System, Hood
6	AL4019058	Kit, Turret, Upper, Litter System

Incompatible with turret mounted rear ammo cans

Not pictured here

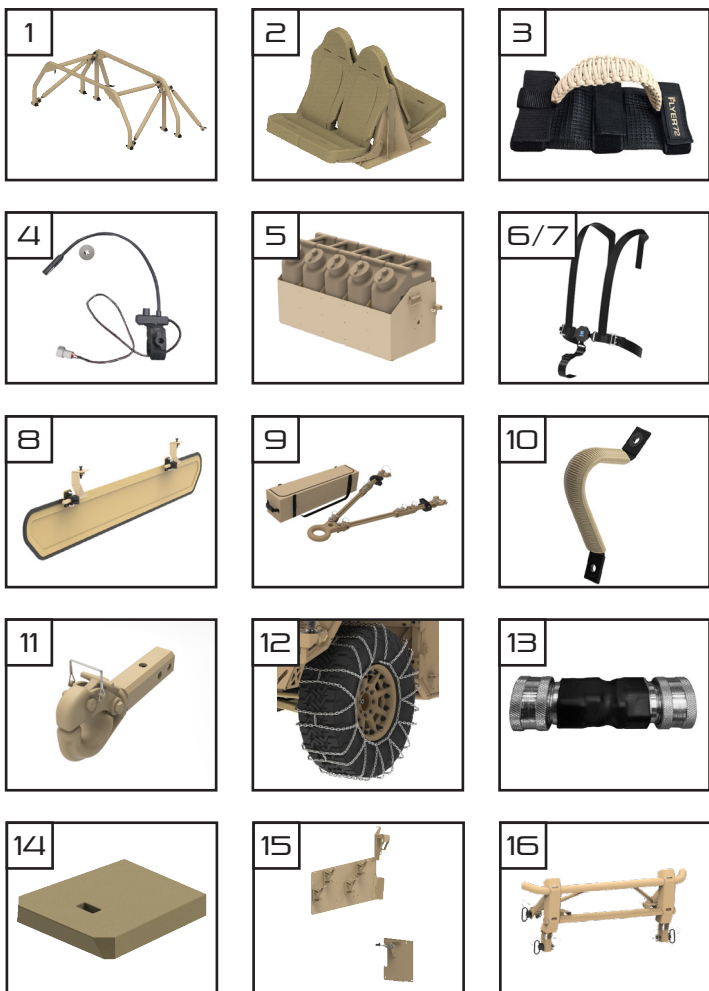
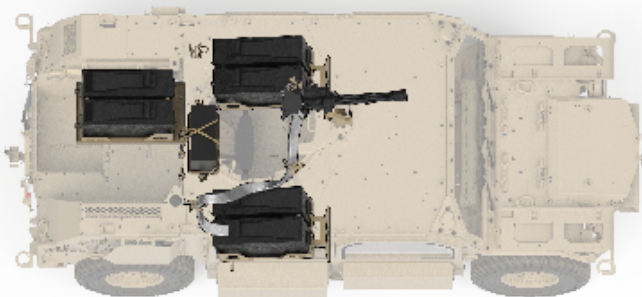


KIT, MK-44 (18,000 ROUNDS)

(AL4002210)

ENVIRONMENTAL KITS

Kit, Arctic (AL4002210) & Kit, Mud Guard (AL4010357)



ADDITIONAL ITEMS

1	AL4011420	AGMV Double Roll Cage
2	AL4011742	Assembly, Rear Bench Seating, AGMV
3	AL4011774	Paracord Grab Handle, Velcro Mount
4	57K8476	Kit, Blackout Light
5	AL4021049	System, Box Side, Jerry Can
6	AL4021077	Belt, Harness, Rotary Latch, Locked Left
7	AL4021078	Belt, Harness, Rotary Latch, Locked Right
8	AL4011891	Kit, Sun Visor
9	AL4021802	Kit, Tow Bar with Bag
10	AL4011888	Paracord Grommet Grab Handles Khaki
11	AL4011138	Assembly, Towing, Pintle
12*	AL4006820	Set, Axle, Tire Chain, 17 inch Wheel, 37 inch Tire
13	AL4012890	Assembly, Quick Disconnect Adapter
14	AL4017339	Cushion, Booster, Driver Seat
15**	AL4022632	Assembly, Tailgate, Pioneer, Kit
16	AL4023855	Assy, Bull Bar

* For vehicles upgraded to HD Wheel Assembly, use AL4023013

** Required only for PY6 vehicles for SIBR and CASEVAC Kit

TRAINING

OPNET-MTT	Operator New Equipment Training Course
ATDC-MTT	Advanced Tactical Driver Training Course
IMT-MTT	Intermediate Maintainer Training Course